

16

high - er high, low, high, low

19

Sua

High _____ it's just like

20

(Sua)

talk-ing on-ly you sus-tain it and make it sound pret-ty _____

22

JOVIE: No! In 4 (BUDDY:)

Just sing a Christ-mas song

27

it's like mag-ic if things go wrong Just spread some

30


Christ-mas cheer by sing-ing loud for all _____ to


JOVIE: People are staring.
 BUDDY: That's the point. BUDDY, A FEW MEMBERS OF THE CROWD:

33

hear Just sing a

36 
Christ - mas song and keep on sing-ing all seas-on long

39 
Think of the joy you'll bring if you just close your eyes—


42 
— and sing And

+ MORE MEMBERS
OF THE CROWD:


45 
if you're short on cheer think a-bout that year

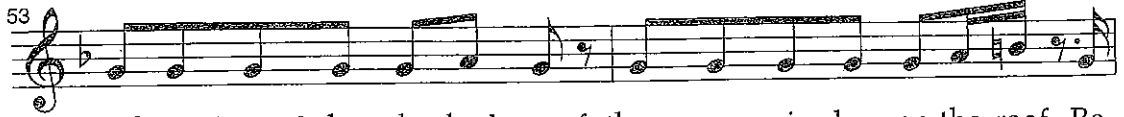
47 
you woke up to find a brand new snow had fal - len The

+ MORE MEMBERS
OF THE CROWD:

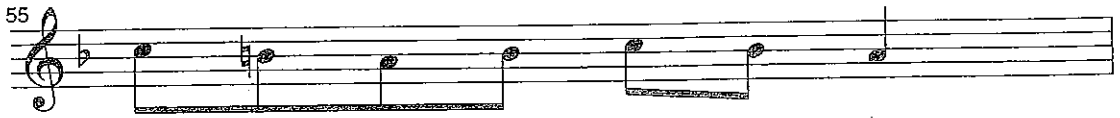
49 
or-na-ments you made way back in sec-ond grade Un -

ALL:
(except JOVIE)

51 
tang-l-ing the Christ-mas lights took your fath-er seve-ral nights Your



moth-er claimed that she had proof there were rein-deer on the roof Re-



mem - ber who you were back then?

BUDDY: Come on Jovie! Try it for me!



Let those mom-ents live a - gain! _____

(JOVIE closes her eyes and sings, tentatively at first, but growing more confident.)

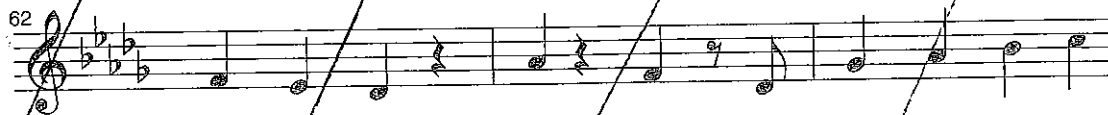
BUDDY: That's it!

JOVIE:



Just sing a Christ-mas song It's like mag-ic if

BUDDY: Keep going!



things go wrong Just spread some Christ-mas cheer by



sing-ing loud for all _____ to