

SCENE NINE

NEVER FALL IN LOVE (WITH AN ELF)

(JOVIE, dressed to the nines, stands forlornly in front of what is now
"Trump's Tavern on the Green." JOVIE looks at her watch, sighs and sings.)

Torchy 2 **Rall.** **JOVIE:**

He's

5

sever-al ho-urs late the sky-line's grow-ing dim while

7

oth-ers deck the halls you dream of deck-ing

Swingin'

9

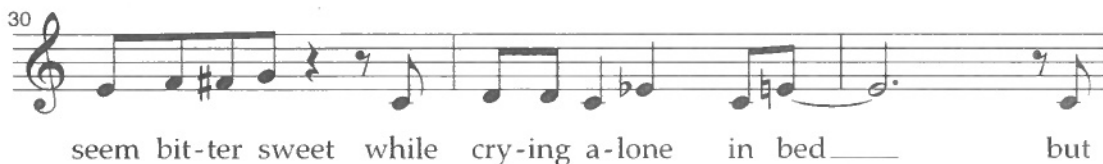
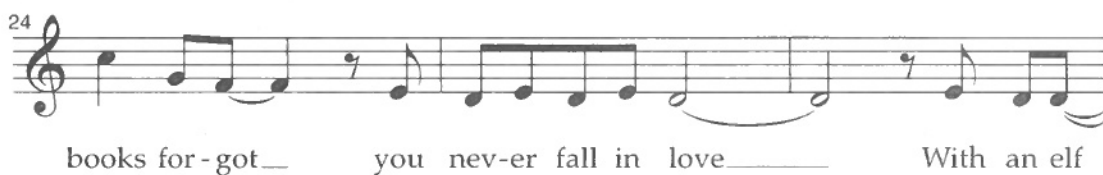
him My choice in men has


12

al-ways been pa-thet-ic I sup-pose The


15


guy who stole my cre-dit cards the guy who tried on my clothes




41 
 ia They'll say it's clear as day, you're

43 
 in for sleep-less nights if you date a guy who

45 
 has a thing for tights Oh, nev-er fall in love

47 
 nev-er fall in love

50 
 nev-er fall in love

53 
 with an elf it's as

56 
 clear as a jin - gle bell if you are sin - gle, well,

57 
 don't fall in love with an elf!